

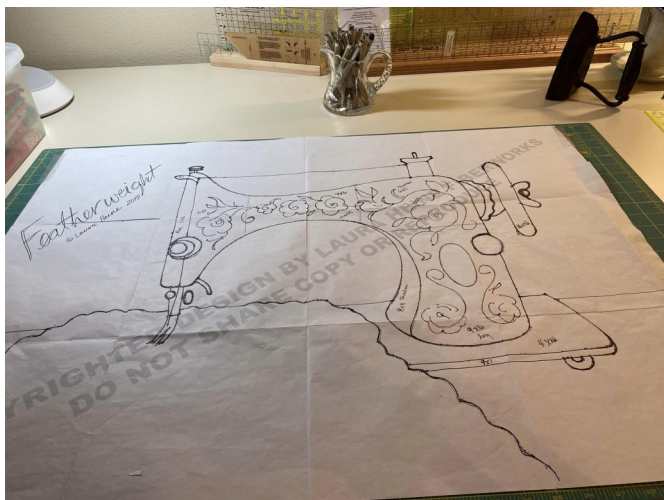
Collage Class

Ann Wilson

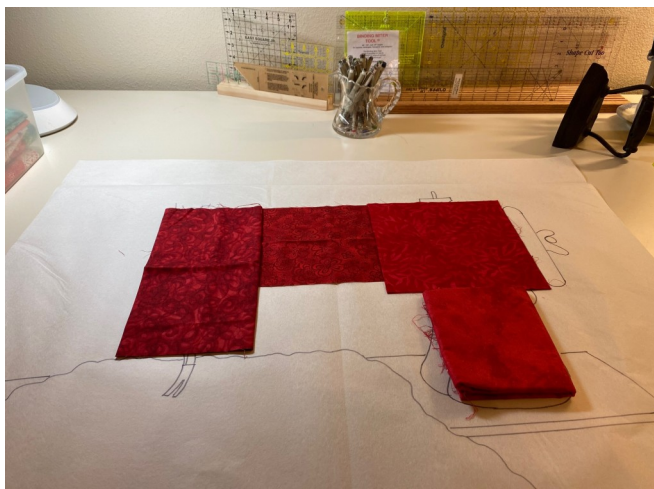
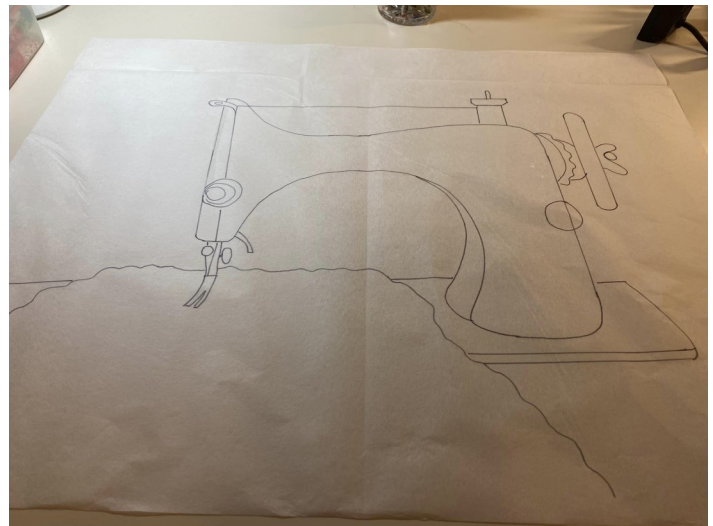
Laura Heine Certified Instructor

This is the pattern that is being taught at this year's retreat. It is not finished. I use it as part of the teaching program. This collage quilt is done in Christmas fabric. I have another one using fall fabric. Choose fabrics that make you happy. After making a collage quilt in colors that aren't my favorite, I learned to pick fabrics that I enjoy.

I have started the process of choosing my fabric for your class. Right now it looks like the featherweight may be red instead of black. I will post updates frequently, to help make the collage process easier for any new quilters.

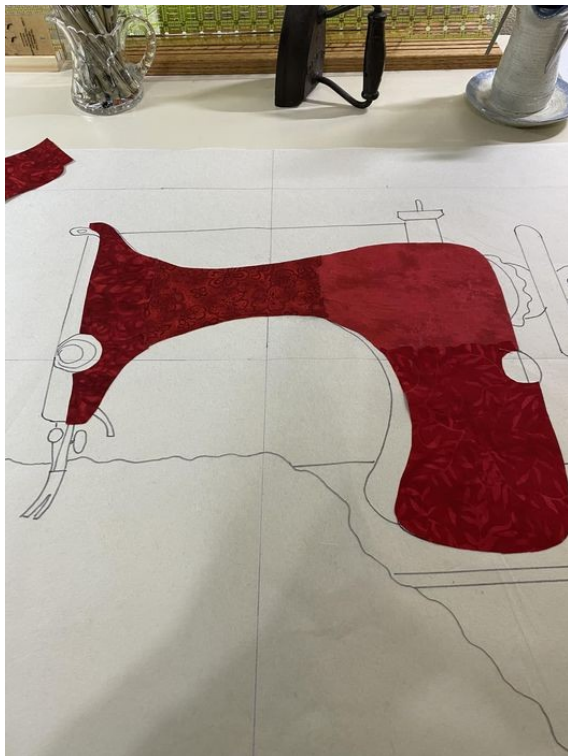


The photo to the left is the pattern. The picture below is the pattern traced on Pattern Ease. We only use the pattern outline for the class. The rest is just suggested placement of Doo Dads.



Auditioning my fabric for the featherweight body. You will need - three 8" squares and one 4 x12 rectangle. I will show you my progress, so that you may begin putting together your fabric for the class.

The fabric is on Steam a Seam 2. I added some background fabric to fill in the spaces. You need to use Steam a Seam 2 regular, not lite. I use 12 inch wide Steam a Seam. You may use any width you like but the wider it is, the more difficult it will be to work with.



I am making my featherweight red. I have four black ones already. You don't need to use black. Make it whimsical and fun.